

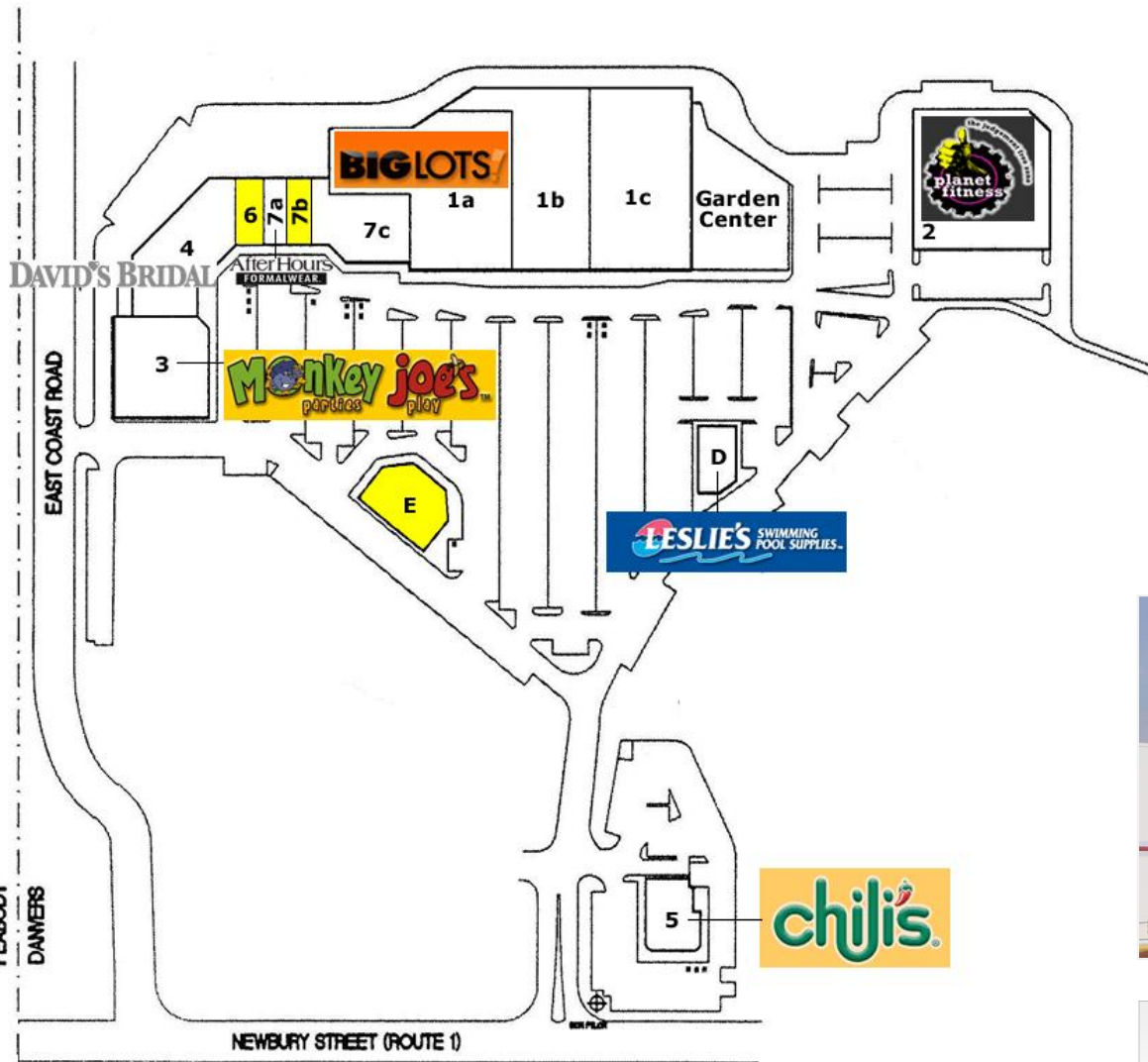
Danvers Crossing

8-10 Newbury Street - Danvers, MA 01923



CHARTER REALTY & DEVELOPMENT CORP.

Building Value Through Relationships



SUITE	TENANT	SIZE
1a	Big Lots	33000
1b	Dollar Tree	19500
1c	Ann & Hope Curtain & Bath Outlet	33900
2	Planet Fitness	25000
3	Monkey Joe's	14915
4	David's Bridal	15874
5	Chili's	6200
6	Available	2125
7a	After Hours Formalwear	2300
7b	Available	2000
7c	Monster Mini Golf	10000
Pad D	Leslie's Pool	4000
Pad E	Available - Former Restaurant	7488



FOR MORE INFORMATION CONTACT:

CAROL HUTCHINSON

1666 Massachusetts Avenue

Lexington, MA 02420

Phone: (617) 591-9995

Email: carol@chartweb.com

Website: www.chartweb.com

Danvers Crossing

8-10 Newbury Street - Danvers, MA 01923

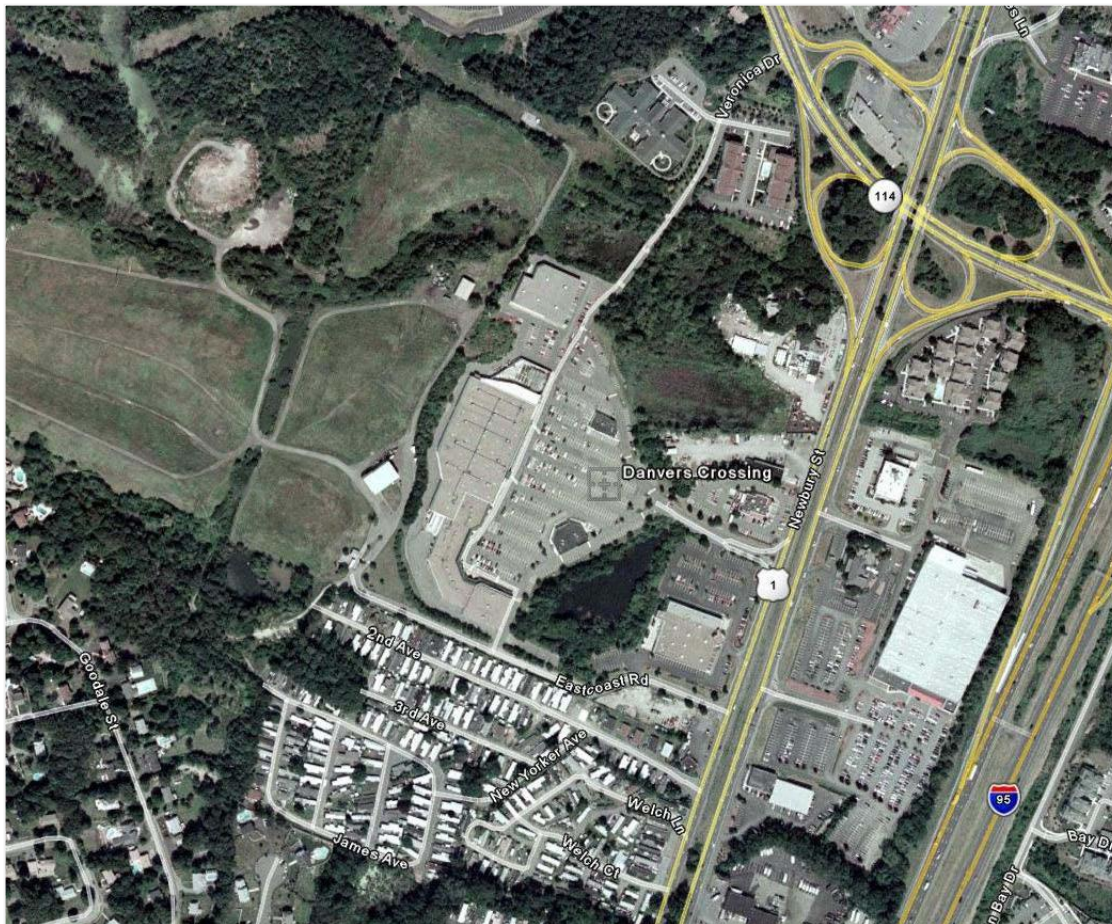


**CHARTER REALTY &
DEVELOPMENT CORP.**

Building Value Through Relationships

DEMOGRAPHICS

	Population 2010	Population 2015 est.	Median H.H. Income	Average H.H. Income
3 Mile	57,611	62,421	\$75,907.00	\$90,485.00
5 Mile	151,744	160,195	\$71,491.00	\$87,509.00
7 Mile	354,359	368,841	\$67,136.00	\$84,712.00



PROPERTY INFORMATION

- GLA 175733
- Easy access to I-91.

FOR MORE INFORMATION CONTACT:

CAROL HUTCHINSON

1666 Massachusetts Avenue

Lexington, MA 02420

Phone: (617) 591-9995

Email: carol@chartweb.com

Website: www.chartweb.com