

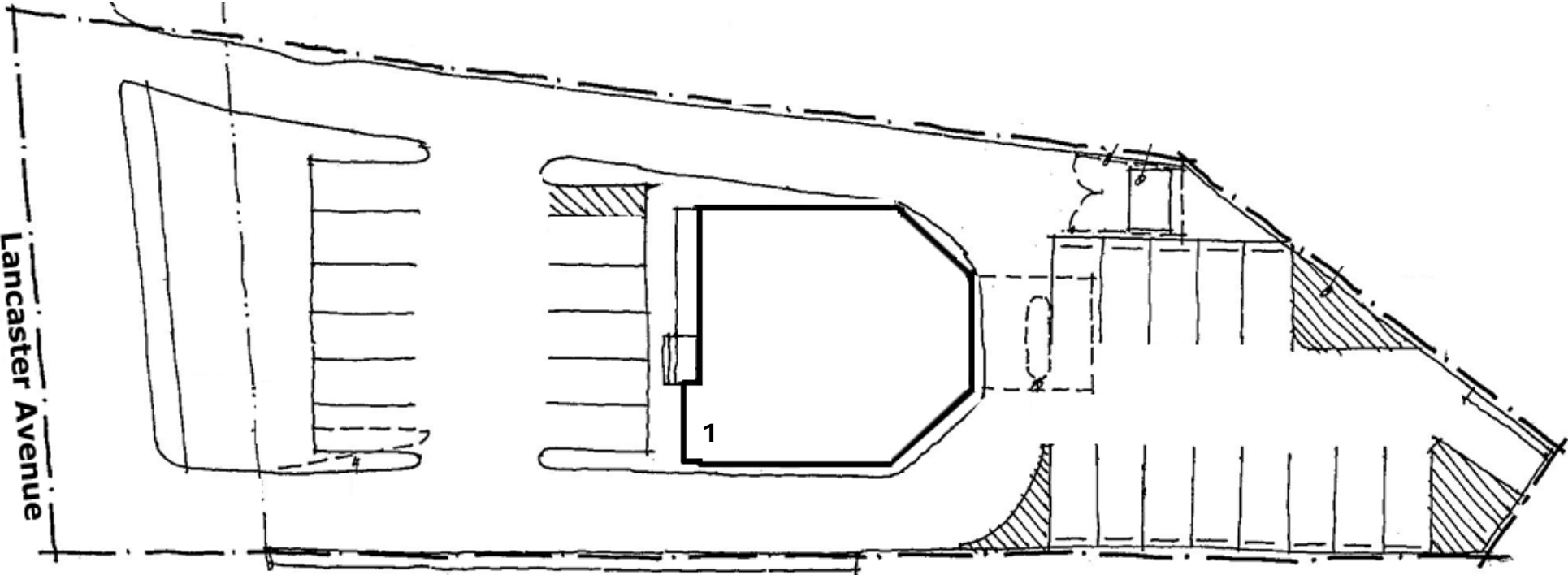
Lancaster Avenue

312 Lancaster Avenue - Wynnewood, PA 19096



CHARTER REALTY & DEVELOPMENT CORP.

Building Value Through Relationships



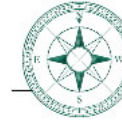
| SUITE | TENANT | SQUARE FEET |
|-------|-----------|-------------|
| 1 | Available | 2,572 |

FOR MORE INFORMATION CONTACT:

DANIEL MORTIMER
940 Haverford Road
Bryn Mawr, PA 19010
Phone: 484 419 1192
Email: dmortimer@chartweb.com
Website: www.chartweb.com

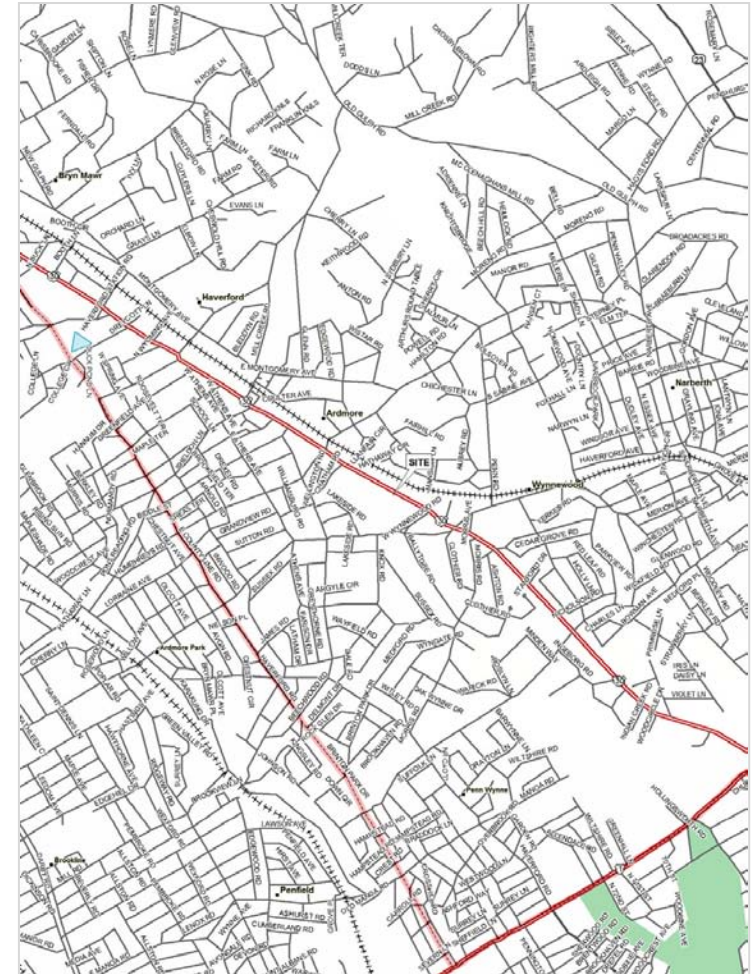
Lancaster Avenue

312 Lancaster Avenue - Wynnewood, PA 19096



**CHARTER REALTY &
DEVELOPMENT CORP.**

Building Value Through Relationships



PROPERTY INFORMATION

- GLA 2,572 sf

FOR MORE INFORMATION CONTACT:

DANIEL MORTIMER

940 Haverford Road

Bryn Mawr, PA 19010

Phone: 484 419 1192

Email: dmortimer@chartweb.com

Website: www.chartweb.com