

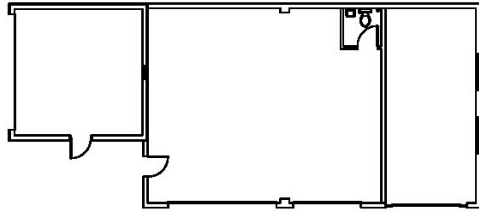
Building For Sale

944 Haverford Road - Bryn Mawr, PA 19010



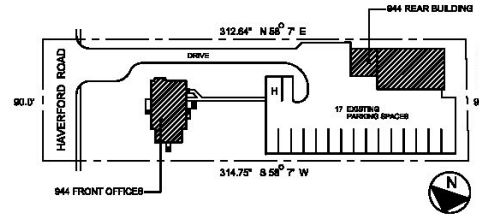
CHARTER REALTY & DEVELOPMENT CORP.

Building Value Through Relationships



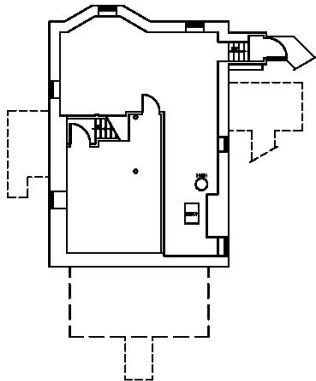
5 EXISTING PLAN
A-1 1/8" = 1'-0"

944 REAR BUILDING



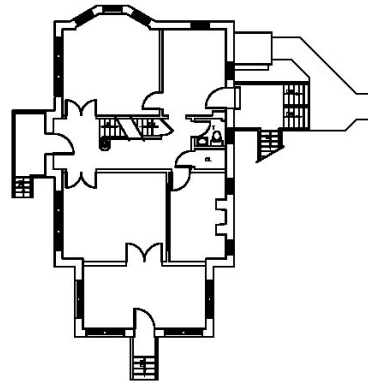
7 SITE PLAN
A-1 1" = 80'

944 FRONT OFFICES AND REAR BUILDING

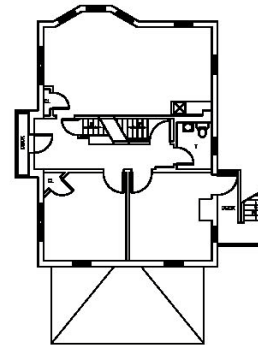


1 BASEMENT PLAN
A-1 1/8" = 1'-0"

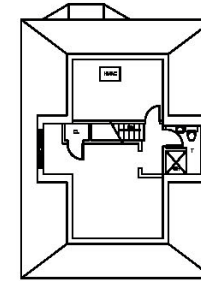
944 FRONT OFFICES



2 1ST FLOOR PLAN
A-1 1/8" = 1'-0"



3 2ND FLOOR PLAN
A-1 1/8" = 1'-0"



4 3RD FLOOR PLAN
A-1 1/8" = 1'-0"

PROPERTY INFORMATION

- GLA 4,500 sf
- 2 Buildings (2,500 sf & 2,00 sf) on 1/2 acre of land for sale at \$1.5M.

FOR MORE INFORMATION CONTACT:

DANIEL MORTIMER

940 Haverford Road
Bryn Mawr, PA 19010

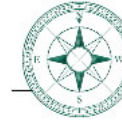
Phone: 484 419 1192

Email: dmortimer@chartweb.com

Website: www.chartweb.com

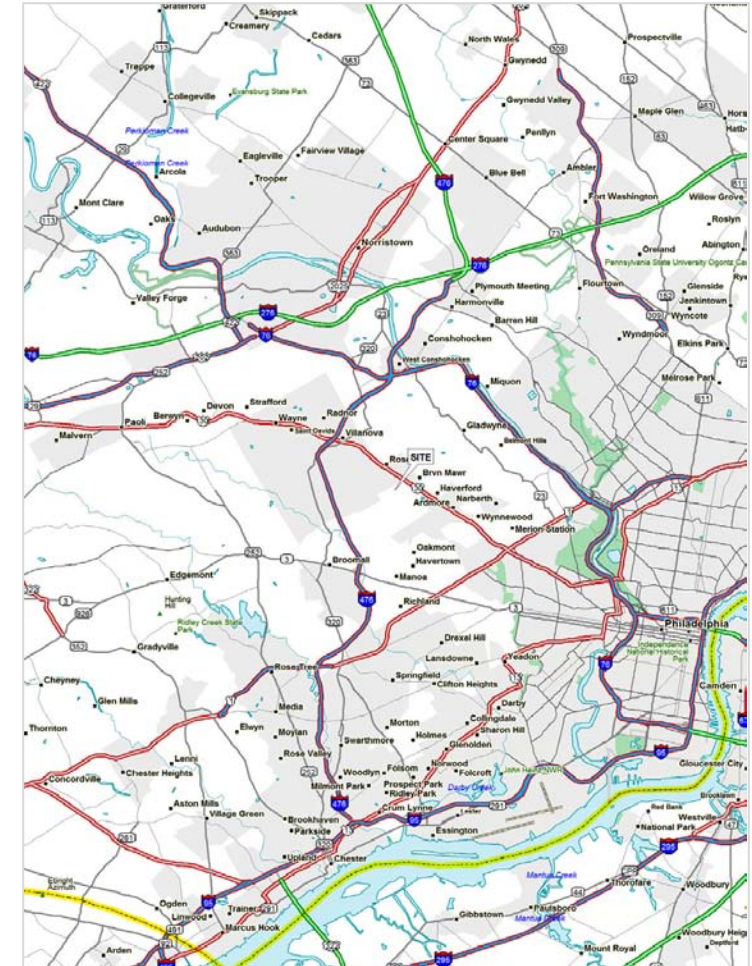
Building For Sale

944 Haverford Road - Bryn Mawr, PA 19010



**CHARTER REALTY &
DEVELOPMENT CORP.**

Building Value Through Relationships



FOR MORE INFORMATION CONTACT:

DANIEL MORTIMER

940 Haverford Road

Bryn Mawr, PA 19010

Phone: 484 419 1192

Email: dmortimer@chartweb.com

Website: www.chartweb.com